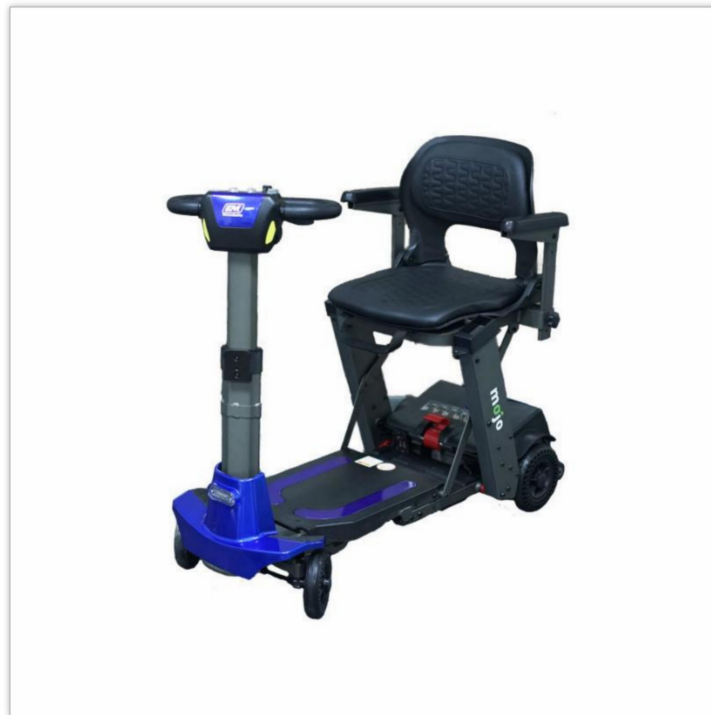


mojo

Auto-Fold Scooter



User Manual

April 2023



Enhance Your Life

Thank you for choosing the MOJO Folding Scooter. Please read this manual carefully before operating the MOJO. If you have any questions or need further assistance, please contact your MOJO Dealer or Enhance Mobility directly at 800-296-4151 option 2 or service@enhancemobility.com.

This manual covers the MOJO's characteristics, components, functions, safety guidelines, battery, and maintenance.



The following symbol is used in this manual to indicate warning. It is extremely important you fully understand the content. Failure to note the warnings may cause personal injury and/or damage the scooter.

Please note all information and photos in this manual are for reference only and are subject to factory changes and modifications.

Before using your MOJO Scooter please be sure that the delivery is complete. Your MOJO package should include the owner manual, 2 batteries, key, remote control (automatic folding version only), basket, battery charger, removable arm rests, 2 thumb screws and 2 allen wrenches. If you did not receive a complete delivery, contact your authorized MOJO dealer. If damage has occurred to the packaging or contents during transport, contact the delivery company immediately.

Contents

1. MOJO Feature Guide
2. Product Specifications
3. Key Components
4. MOJO Operating Instructions
5. Folding and Unfolding the MOJO
6. Safety Requirements
7. Battery Maintenance & Battery Charging
8. Scooter Maintenance
9. Basic Trouble Shooting
10. Warranty Information



Children should not operate the MOJO Electric Scooter.

People with health concerns should consult a physician before use.

1. MOJO Feature Guide

The MOJO is composed of the following parts: front and rear frame, handlebar controls, rear wheels, front wheels, front shroud, headlight, tiller, height adjustment lock lever, tiller tilt adjuster, foldable seat, seat supporting frame, deck, battery, charger port, armrests and remote bi-pass switch.



- | | |
|---|---------------------------|
| 1. Handlebar Control Panel | 11. Anti-Tip Wheel |
| 2. Steering Handle | 12. Rear Axle Group |
| 3. Forward/Reverse Directional Controls | 13. Arm Screws |
| 4. Telescoping Tiller | 14. Armrests |
| 5. Height Adjustment Lock Lever | 15. Backrest |
| 6. Front Shroud | 16. Seat Cushion |
| 7. Battery | 17. Tiller Tilt Adjuster |
| 8. Front Wheels | 18. Free Wheel Lever |
| 9. Deck | 19. Remote Bi-Pass Switch |
| 10. Rear Wheel | 20. Charger Port |
| | 21. Headlight |

2. MOJO Specifications

Model	MOJO Auto-Fold (MJ101)
Overall Length	39 ¾”
Overall Width	18”
Tires	Honeycomb 6” Solid Front Tire
	Honeycomb 7” Solid Rear Tires
Maximum Speed	Up to 3.75 mph
Range	Up to 13 miles
Turning Radius	55”
Weight (without battery pack)	50 lbs
Color	Red, Blue, Aqua, Lemony-Lime
Brake	Electromagnetic
Drive system	Rear Wheel Drive
Handlebar	PU Foam
Maximum weight capacity	Up to 300 lbs
Seat Width	13.75”
Seat Height (from the ground)	23”
Battery	Dual (2) 24V 7.5AH
Motor	24V 120W
Battery Charger	29V 2AH
Folded Length	20 ½”
Folded Height	29”
Heaviest Piece	Front Frame 30.5lbs
Ground Clearance	1”

3. Key Components

Handlebar Controls



The Handlebar Control consists of the steering handle, LCD display with battery indicator, keyed ignition, directional controls, automatic folding switch, horn and speed control.



Always protect the MOJO Handlebar Controls from humidity and water. If the handlebar controls have been affected by moisture, be sure to dry before operation.



Always slow down when turning or operating in reverse.

4. Operating Instructions

Turning on the Power

Put key in ignition and turn clockwise to turn on. The LCD display will turn on when the scooter is on. Turn the key counterclockwise to power off. The LCD display will turn off when the scooter is off. Please note – If the Free Wheel Lever is engaged the scooter will make a beeping noise when the scooter is turned on. Disengage the Free Wheel Lever to operate the scooter.

Free Wheel Lever

The free wheel lever is located on the rear of the scooter on the left-hand side. Pushing the lever down will allow the wheels to move freely. The lever must be pulled up to drive the scooter. Please note – when Free Wheel is engaged the scooter will slow down if being pushed/pulled too fast.



Forward/Reverse Directional Control Lever

The Forward/Reverse Directional Control Lever is used to control forward and reverse motion. To move forward - slowly push the right-side fingertip control paddle towards the handlebar. The further you push, the faster the scooter will go. To reverse – slowly push the left side of the fingertip control paddle towards the handlebar. Stop the scooter by releasing the directional control lever.



LCD Display

The LCD Display shows the battery level, battery voltage, speed you are traveling at and distance. The battery level indicator will show the battery level when the scooter is on. When 5 bars are visible, the battery is fully charged. The bars disappear as the battery loses charge. The battery is ½ charged when 3 bars are left.



When there is only bar left, the battery needs to be charged.

See section 7 for more information about battery charging

Automatic Folding Switch

The Automatic Folding switch is located on the control pod. The switch can be used instead of the remote control to open and close the scooter. To close the scooter, press the Automatic Folding Switch toward the “II” and hold the button, the scooter will fold, release the button when the scooter is fully closed. To open the scooter, press the Automatic Folding Switch toward the 1 and hold the button down, the scooter will open, release the button when the scooter is fully opened.

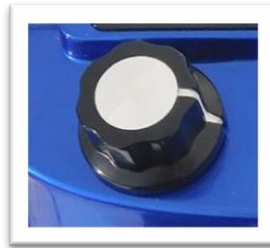
Automatic Folding Switch



Automatic Folding Switch

Speed Control Knob

The speed control knob is used for controlling the scooter's speed. Adjust the knob to the left for slower speeds; adjust the knob to the right to increase the speed.



Brakes

The MOJO Scooter is equipped with electromagnetic brakes. Releasing the directional control lever will stop the scooter.

Horn

The horn is located on the front side of the control unit. When you press the button, the horn will sound.



Horn

Armrests

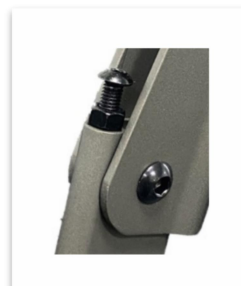
Armrests come standard with the MOJO. The scooter can be used with or without the armrests. To install the MOJO armrests, slide the right armrest into the right armrest bracket and insert the thumb screw at desired height (pic 1). Repeat on the left side.

The angle of the armrest can be adjusted by adjusting the height of the screw in the armrest. The higher the screw, the higher the pitch of the armrest (pic 2).

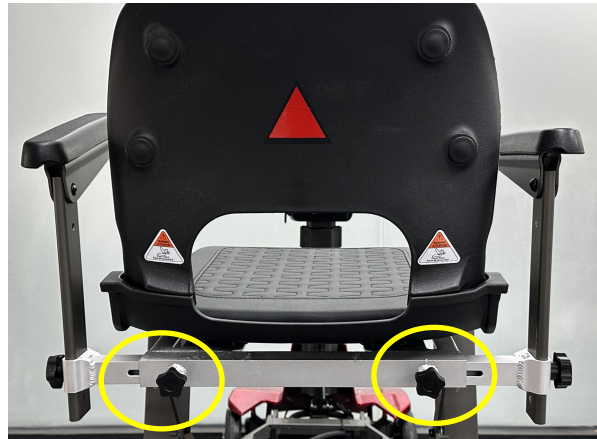
1



2



Armrest adjustment



Adjustable armrest width



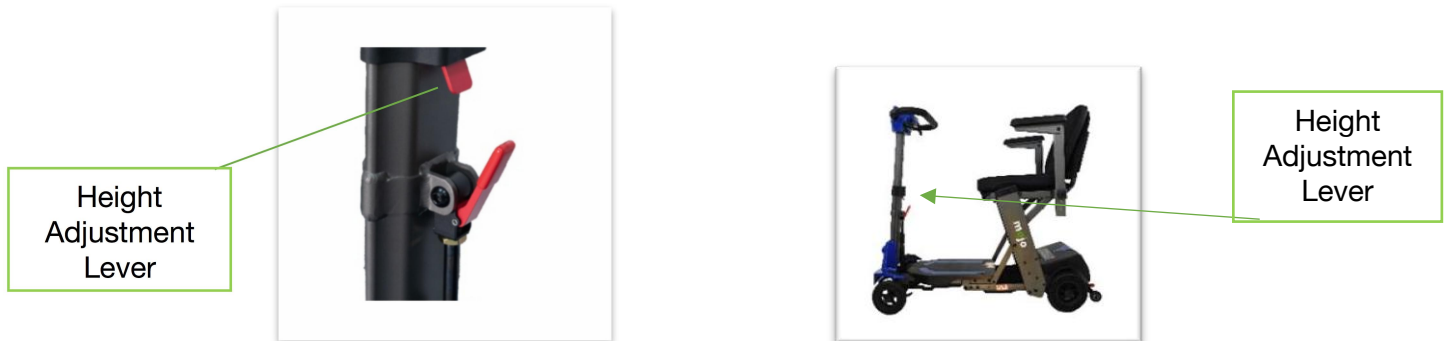
Turn counterclockwise to loosen the screw.



Pull the armrest to adjust the desired width and tighten the screws clockwise.

Telescoping Tiller

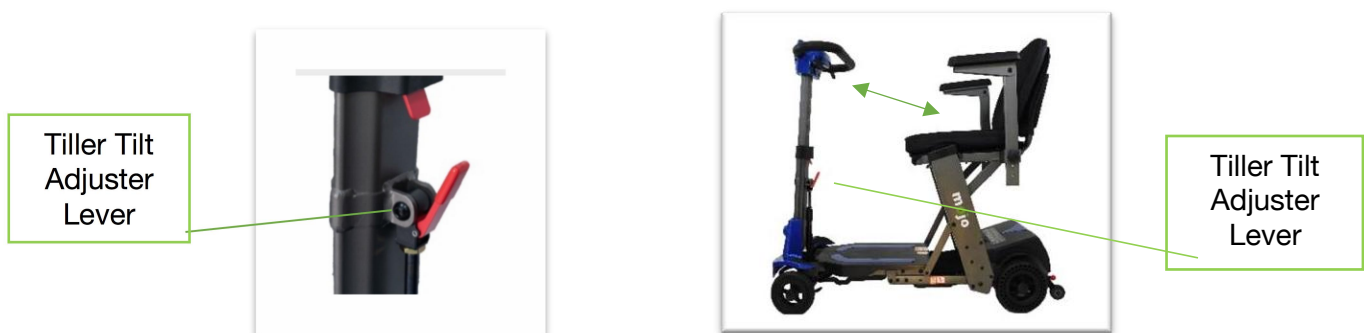
The tiller height can be adjusted. Push and hold the height adjustment lever while pulling up or down on the tiller.



When the tiller is adjusted to your liking, let go of the height adjustment lever to lock the tiller into place.

Adjusting the Tiller

The MOJO's tiller can adjust for rider's comfort. To adjust – squeeze and hold the tiller tilt adjuster lever towards the tiller then move the tiller towards the seat to a reach comfortable position. To put the tiller to the original position, squeeze the tiller tilt adjuster lever and the tiller will move to the original position.



Attaching the Basket

The basket attaches to the bracket on the front of the tiller. Simply slide the basket into place. The basket can be easily removed and folded for transport and storage.



5. Folding and Unfolding the MOJO Automatic Remote-Control Operation (Key Fob)



The remote control works while the scooter power is on or off. Extra care should be taken to be sure buttons are not pressed when the scooter is stored in a car or place where the scooter would be restricted from fully opening/closing.

To unfold (open) the MOJO Scooter, press and hold the open button on the key fob until the scooter is fully open.



To Fold (close) the MOJO Scooter – press and hold the fold button on the key fob until the scooter is fully closed.



The Telescoping Tiller can be raised or lowered before or after folding or unfolding the scooter.
Press the Power Button to turn on and off the scooter.
Press the Headlight Button to turn on and off the headlights.

The remote indicator light comes on when a button is pressed on the remote control. If you press a button and it flickers or does not come on, the battery in the remote control should be replaced. The remote control uses a CR3032 battery. If the remote indicator light doesn't turn off, it indicates one of the buttons is stuck on the remote control and needs adjustment.

Syncing the Remote Control (Key Fob)

Find the Remote Relay Box by lifting the cloth along the bottom of the scooter, located directly below the seat. Press the button on the remote relay box one time. The blue light will flash three times and you will hear three beeps. Then press the close button once with the remote control. The blue light will flash three times and there will be two beeps indicating the remote has been successfully synced.

To clear the remote-control memory, press and hold the button on the remote relay box for five seconds. There will be one beep to indicate the memory has been cleared.



Clot
h



Remote
Relay
Box

MOJO Disassembly



1 – Front Frame Assembly
2 – Rear Axle Group Release Lever
3 – Rear Axle Group



Pull the Rear Group Release Lever toward the back of the scooter until the anti-tip wheels touch the ground. At the same time, lift on the Front Frame Assembly.



Continue to push the front frame assembly up and forward until the front frame assembly is separated from the Rear Axle Group.



Done.

MOJO Assembly



1 – Rear Axle Group Release Lever
2 – Rear Axle Group
3 – Front Frame Assembly
4 – Front Frame Stand
5 – Guide for Front Frame



Pull up on Rear Axle Group Release Lever until the anti-tip wheels touch the ground.



Lift the seat and align the Front Frame Stand onto the Guide for the Front Frame.



Pull the Front Frame Assembly down to the Rear Axle Group.



Let the Front Frame Assembly settle in place and release the Rear Axle Group Release Lever.



Done !

6. Safety Requirements

Driving Surface

The MOJO has the best stability under normal driving conditions (dry, level ground with concrete or asphalt). Extra care must be taken when riding on other surfaces (grass, gravel, etc.)



It is unsafe to drive the MOJO up steep inclines.

Please read the manual instruction completely before operation.

- Check the physical conditions (tires, battery, bolts) before driving the scooter.
- ***ALWAYS SLOW DOWN BEFORE TURNING.***
- ***ALWAYS TURN THE KEY OFF BEFORE GETTING ON OR OFF THE SCOOTER.***
- The MOJO can be used safely in short grass and hard gravel.
- Avoid driving in loose gravel, soft soil, and sandstone.
- Do not drive the scooter in unknown road conditions.
- The MOJO can ride over small obstacles within a certain height, but you must minimize the speed and slowly drive over the obstacle.
- Do not operate the scooter before you have fully read and understand this manual.
- Do not carry additional riders on the scooter, chassis or lap.
- Do not operate while under the influence of alcohol or drugs.
- Slow down when operating on uneven or soft ground.
- Do not park on slopes.
- Changing the initial setting or refitting your scooter will void the warranty.
- Use caution when operating near busy streets, markets, or shopping centers. Do not operate in unsafe areas. Please consult local authorities about the traffic rules for scooters.
- Hold the handlebar with both hands and put both feet on the deck when operating.
- Never sit on the MOJO in a moving vehicle.
- Do not exceed the maximum gradient when driving
- Do not exceed the MOJO maximum weight capacity of 300lbs. This weight includes rider, accessories and baggage.
- Do not reverse on uneven slopes or uneven ground; be careful when passing over slopes.
- Never use the MOJO to go up or down stairs.
- Never take your MOJO on an escalator.
- Do not operate on frozen, slippery, or salty ground.
- Never charge a frozen battery.

7. Battery Maintenance & Charging

The MOJO Scooter is designed to use two maintenance free 24.9V/7.5 AH Lithium Batteries. It comes with an easy-to-use DC29V-2AH charger.

- Charge the battery completely before the first operation. Not doing so can cause damage to the battery.
- Make sure key is in the off position to charge the battery.
- The battery should be charged monthly when not utilizing or when storing for long periods.

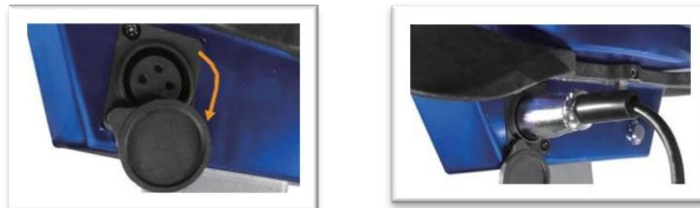
Installing MOJO Batteries

To install, slide the batteries into the battery compartments (1) on each side of the seat (2). Pull up on strap to remove (3).




Charging your MOJO

1. Turn off the MOJO and remove the key.
2. Open the charger cap on the Control Pod and insert the charger into the charging port.
3. Plug AC power outlet into household power outlet. Red light on the charger indicates power is on and the unit is charging. The green light on the charger means the battery is fully charged.
4. Unplug the charger when charging is complete.



The battery can be charged out of the scooter using the optional docking station accessory.

 Match the charger port and charger plug properly. Do not force.

Guide to a Safe and Long-Lasting Battery

How does the charger work?

When the battery voltage is low, the battery charger outputs a large current to charge the battery. When the battery voltage is near full, the battery charger outputs a small current. When the battery is full, the battery charger will output very little current. Therefore, the battery will continually charge after connecting the charger, but will not overcharge. It is better to charge the battery for less than 24 hours

What does the light on the charger mean?

The red light indicates that the scooter is charging. The green light indicates the battery is fully charged.

Can other chargers be used?

To charge safely and efficiently, use the charger supplied by the original manufacturer only. Using any other charger will void warranty.

How often should you charge the battery?

The charge time depends on the use.

- If you're operating the scooter every day, charge after each use so it will have a full charge the next day.
- If you're operating the scooter once a week, then the battery should be charged once a week. If at any time the battery indicator has only red lights lit, charge the battery.
- If you are not using the scooter for more than 3 weeks, remove battery from scooter, store in a warm, dry location and charge every month. The time to charge the battery fully can vary from 6 to 8 hours.

 **Do not let the battery fully discharge before charging.**

How can you get the maximum operating distance?

Driving conditions such as hills, uneven and soft surface, temperature, and user weight will affect the distance or running time for battery life.

Methods of obtaining the maximum driving distance

- Fully charge your battery before operating the MOJO.
- Maintain a constant speed when possible.
- Only carry the necessities to reduce weight.
- Avoid intermittent driving.

Why is the power of the new battery weak?

Deep-cycle batteries use unique chemical technology and design. It can be charged quickly and be used for a long time after a full charge. The battery is fully charged before leaving the factory but may change its initial performance during the transportation due to the temperature. The power of the battery will lessen in higher temperatures, and it will extend the charging time in low temperatures. The battery requires a few days to adapt to the surrounding environment before it gets stable performance.

More importantly, a deep cycle battery will get higher performance after several charging – discharging cycles.

Please follow the steps below to improve the battery performance:

- A new battery must be fully charged before using.
- Low speeds are recommended for the first time. Do not travel too far until you are familiar with the operation of the scooter and the battery.
- Fully charge the battery after operating the MOJO the second time.
- The battery capacity will reach 100% and extend the driving time after four to five charging and discharging cycles.

How to ensure the battery life

A fully charged battery will provide better performance and extend battery life. Do not fully discharge the battery.

How to store scooter and battery

- Charge your battery fully before you store it.
- Remove battery from the MOJO.
- Store your scooter and battery in warm, dry place, not hot.
- Avoid storing the scooter in area with drastic temperature variations.
- If storing the scooter, charge battery at least once per month.
- For optimal battery life, be sure to use your scooter monthly.

 **Do not dismantle the battery and do not add water. Failure to observe this warning will void the warranty and damage the battery and scooter.**

 **If battery is frozen, warm for several days before charging.**

8. Maintenance

With care and regular maintenance, the MOJO is designed to provide years of enjoyment. The following will keep your MOJO running at optimum levels.

Battery

- Make sure battery is fully charged.
- Store the battery in a dry environment.
- Check electrode connections for corrosion.
- Never charge a frozen battery (warm for a couple days before charging).
- Never fully discharge the battery. Charge once a month when storing the scooter.

Seat

- Clean seat cover with clean, damp cloth.

Cleaning

- A clean, damp, non-abrasive cloth works best to wash and clean the MOJO.
- Do not wash your MOJO with a water hose as this may create an electrical short and damage the electrical system.

Wiring

- Check all wire connections and wiring insulation for wear and damage regularly. This includes the charger power cord.

Motor, Bearings and Transmission parts

- These components have been lubricated and sealed by the factory, there is no need to lubricate these parts.
- Store in dry environment. Electric components should avoid moisture. If they come into contact with moisture, dry before use.
- Check and tighten bolts regularly.

9. Basic Troubleshooting

Power stops while operating

- Make sure key is in the ON position.
- Make sure battery is properly inserted.
- Make sure battery is properly charged.

Scooter not opening with the Remote Control

- Is there a light that comes on when you press a button on the remote control? If yes, go to next step. If no, change the battery of the remote control.
- Will the scooter fold/unfold with the Automatic Folding Switch? If yes, go to next step. If no, call for service.
- Try to sync the remote control (Section 5) and try to open/close the scooter again. If this step fails, call for service.

Slow speeds while driving

- Adjust speed control knob.
- Make sure battery is properly charged.

Battery is not charging

- Check that the cord is plugged into the wall and scooter completely.
- If there is no light lit on the charger box when plugged into the wall, the charger may be broken. Call for service.

Lost keys or remote control

- Call your local MOJO dealer to order replacements

Armrests not staying up

- Use 4mm Allen wrench to adjust bolt on armrest and a 10mm nut is used to hold the bolt in place. First loosen the nut. If you tighten the bolt, the pitch of the arm rest will go down. If you loosen the bolt, the pitch of the armrest will go up. Tighten the nut to lock the pitch into place.

Lift armrest,
adjust bolt
here



MOJO Error Indicators

If your MOJO won't go, listen to the beeps to help trouble shoot the cause.

1 Beep	The Battery needs to be charged or there is a bad connection. Check the battery connections, if the battery connections are good, charge the battery.
2 Beeps	There is a bad connection to the motor. Check all connection between the motor and the controller.
3 Beeps	The motor has a short circuit of a battery connection. Contact your service agent.
4 Beeps	Not in use.
5 Beeps	Not in use.
6 Beeps	The S-Drive cannot be driven which may be because the battery charger is connected. Check to make sure the battery charger is not connected.
7 Beeps	The throttle is out of order. Make sure no pressure is on the directional control levers and the levers are in the parking position before switching on scooter power.
8 Beeps	A controller fault is indicated. Make sure all connections are secure.
9 Beeps	The parking brake has a bad connection. Check the free-wheel lever is disengaged. Check the parking brake and motor connection. Make sure the controller connections are secure.
10 Beeps	An excessive voltage has been applied to the controller. This is usually due to a battery connection problem. Check battery connection.

If you continue to have trouble with your MOJO, contact Enhance Mobility at 800-296-4151 – Option 2 or your authorized MOJO dealer.

10. Warranty

Standard Warranty

For the Period Listed below at time of purchase, in the event of defective materials or workmanship, Enhance Mobility will repair or replace at our option for the parts that are defective.

MOJO Scooter

2-year parts for all electrical and mechanical components

1-year limited warranty for battery (limited to manufacturers defects - not wear and tear)

3-year warranty on frame

Warranty Exclusions

Tires

Tubes

Trim Pieces and Plastic Shrouds

Upholstery (Seat Back and Seat Cushions)

This warranty also excludes the following:

Loss or theft of any and all accessories (such as keys, remote controls etc.)

Damage caused by:

Abuse, misuse, or negligence

Improper Storage, Operation or Maintenance

Exceeding the specified weight capacity of the unit

Accessories

Acts of Nature

***Enhance Mobility is not liable for damages caused by shipping.**

Enhance Mobility will ship the parts directly to the customer or to the service center of their choice. Enhance Mobility will provide technical assistance and documentation to ensure the scooter is repaired properly.

If after calling in to the Enhance Mobility Service line 800-296-4151- Option 2 and speaking to a service representative, it may be determined that the repair is covered under the warranty and requires return to the factory. In this case the customer will prepay for shipping to and from Enhance Mobility. Shipping Labels will be provided. Labels and return authorizations must be requested and approved by place of Purchase and Enhance Mobility.

Return shipping must be in Original Packing to protect against damage. Enhance Mobility is not responsible for damage caused by shipping. Enhance Mobility will perform the necessary labor and replace covered parts at its expense.

mōjo

