

STANDING AND RAISING AID

Sara Flex — details that make a difference

At Arjo, 60 years of experience have taught us that details are everything. They are the difference between comfort and pain, a calm patient or a frightened patient, a caregiver that can work efficiently or a caregiver always trying to catch up. When moving a patient from a sitting to a standing position, details make all the difference.

Designed to make everyday transfer and care tasks easier, Sara Flex® from Arjo equips one caregiver with the ability to position a patient from a seated to a safe, secure and comfortable standing position, in one ergonomic movement.

It's the details that make every transfer, whether it be to a wheelchair, the toilet, a shower chair or early mobilization following surgery, a positive experience.



Carl mobility spectrum



Sara Flex is specifically designed for patients and residents who are unable to mobilize without assistance but who are able to contribute to the action or perform part of the action independently. Please contact Arjo for further information regarding the Mobility Gallery™.



Optimized patient support

Promotes comfort and security throughout and at the completion of the sit-to-stand movement¹

Easy to use with enhanced maneuverability

Delivers enhanced maneuverability and requires no adjustment, ensuring ease of use

Comprehensive patient coverage

Enables one caregiver to perform sit-to-stand tasks for a wide range of patients in the Carl mobility spectrum

Technical specifications

General

Max. safe working load	440 lbs (200 kg)
Weighing capacity	440 lbs (200 kg)
Weight	114.5 lbs (52 kg)
Weight with scale	118 lbs (53.6 kg)
Total length	39 ¼" (996 mm)
Min. lifting height	39" (991 mm)
Max. lifting height	59 ¾" (1518 mm)
Total height	45 ¾" (1162 mm)
Height of chassis	4" (100.5 mm)
External width, legs closed	26" (660 mm)
External width, legs open	40½" (1029 mm)
Battery	24V DC 4Ah
Battery pack	8.4 lbs (3.8 kg)
Lift protection class	IP24
Hand control protection class	IPX7
Low friction casters, rear two with brakes	
Battery discharge indicator (BDI) — displays remaining power and indicates when the battery needs charging	
Service meter — displays the total motor usage time	
Emergency stop and system failure override	

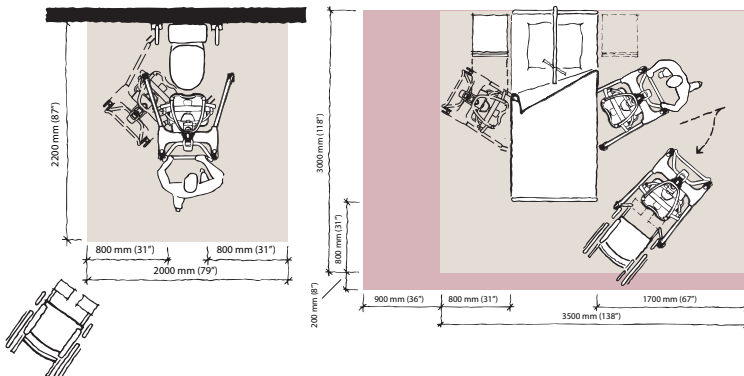
Option

Integrated scale

Approvals

Product specifications

Space requirements



EN/IEC 60601-1 (TÜV SÜD)

EN ISO 10535: 2006 (TÜV SÜD)

Electrical

Degree of protection — electrical shock	Type BF
Lift — protection class	IP24
Hand control — protection class	IPX7
Battery type	Rechargeable — sealed lead acid
Battery part number	NDA0100-20
Battery capacity	24V DC 4Ah
Battery charger	NDA8200
Lift — protection class — shock protection	Internally powered equipment
Lift nominal voltage	24V DC
Fuse	15A type AGC fuse
Operating force of controls	< 5 N
Max. duty cycle, lift actuator	10% MAX (2 min ON/18 min OFF)
Max. duty cycle, leg spread actuator	10% MAX (2 min ON/18 min OFF)
Max. sound power level	50 db

Allowed sling combinations

Standing sling	• TSS.500-L1 (S)
	• TSS.501-L1 (M)
	• TSS.502-L1 (L)
	• TSS.503-L1 (XL)
	• TSS.504-L1 (XXL)
Standing sling (Flites®)	• MFA3000 (patient-specific disposable, one size)
Transfer sling	• TSS.511-L1 (only to be used with central hook)

Light pink area shows the minimum working area required for the staff to be able to use the mechanical aids in an ergonomic way from one side.

Dark pink area shows required extension of working area to facilitate activities from either side to provide adequate access for the resident, mechanical aids and assisting caregiver.

Reference:

1. Fray, M. et al., "An evaluation of sit to stand devices for use in rehabilitation" (white paper, 2018).

At Arjo, we are committed to improving the everyday lives of people affected by reduced mobility and age-related health challenges. With products and solutions that ensure ergonomic patient handling, personal hygiene, disinfection, diagnostics, and the effective prevention of pressure injuries and venous thromboembolism, we help professionals across care environments to continually raise the standard of safe and dignified care. Everything we do, we do with people in mind. www.arjo.us

Arjo Inc. · 2349 West Lake Street · Addison, Illinois 60101 · 800-323-1245 · www.arjo.us

Arjo Canada Inc. · 90 Matheson Blvd West, Suite 350 · Mississauga, ON, L5R 3R3 · 800-665-4831 · Info.Canada@arjo.com · www.arjo.ca

arjo